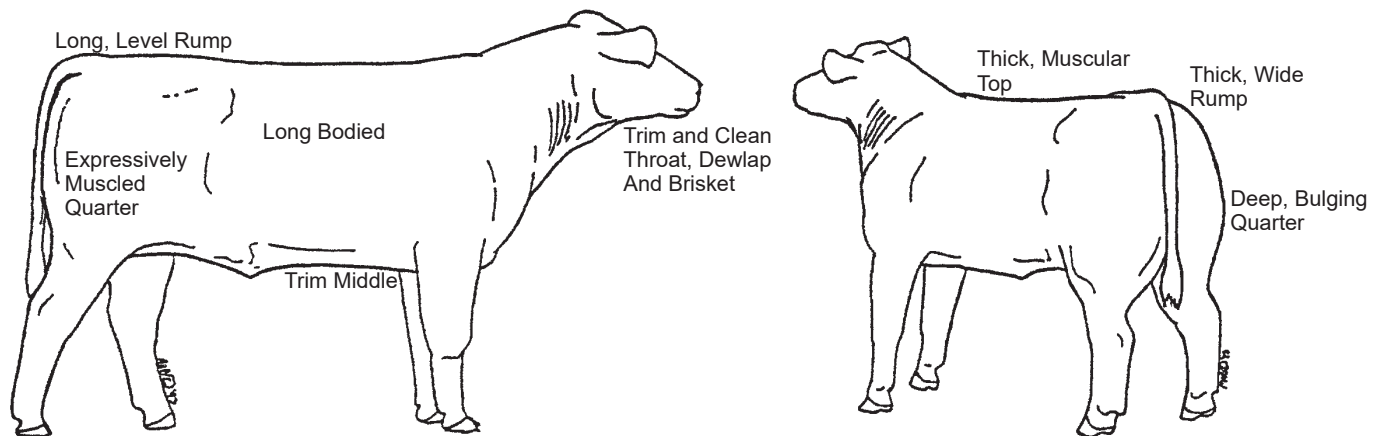


You Be The Judge

Beef Cattle

100.V-1
(94)

The judge visually appraises each animal and compares them as to form and function. Function means the purpose or intended use of the animal. A judge is looking for animals who best fulfill their function. It is a beef animal's function to grow quickly and efficiently, and yield a high quantity and quality of meat product.



Judges Look For...

Muscling, which is one of the major factors influencing the retail value of market beef. The highest priced cuts of meat come from the thickest muscled areas (shoulder, loin, rump and round).

Adequate finish (fat covering under the skin) and no signs of excess fat.

Structural correctness, which includes balance from front to rear, smooth shoulders, levelness of top line and square feet and leg placement and movement.

In The Show Ring...

Presenting the animals to the judge. It takes many hours of work and practice to train an animal to be exhibited correctly. A good exhibitor will present his animal in a quiet, courteous and safe manner, paying attention to both his animal and the judge at all times.

Show sticks do not hurt the animals, but are used to direct the placement of the animal's feet. Desired placement of the legs is squarely under the animal on all fours. The stick is also used to scratch the animal and keep it content.